

# MANISCOPIC

**MT 1435**  
H SLT MU ORH




- Working height : 15.40 m
- Maximum forward reach : 11.05 m
- Max. capacity : 365 kg including 3 people
- HYDRAULIC STABILIZERS and FRAME LEVELLING
- Extendable platform from 2.25 m to 4 m adjustable (180°).
- Numerous platforms options available

 **MANITOU**


# MT 1435 H SLT MU ORH


 **Capacity** .....365 kg including 3 people  
 Working height .....15.40 m  
 Basket floor height.....13.40 m


 **Times** : unladen/loaded (in s)  
 Lifting .....10.8/11.3  
 Lowering .....7.6/7.2  
 Simultaneous extension 1<sup>st</sup> and 2<sup>nd</sup> booms...16.9/18  
 Simultaneous retraction 1<sup>st</sup> and 2<sup>nd</sup> booms...14.5/13.8


 **Tyres**  
 15.5/80-24

 **Equipment**  
 Fork (mm)  
 Length .....1200  
 Width x thickness .....125 X 50  
 Extentable platform from 2.25 m to 4 m adjustable 180°


 **Hydraulically operated brakes with oil immersed discs**

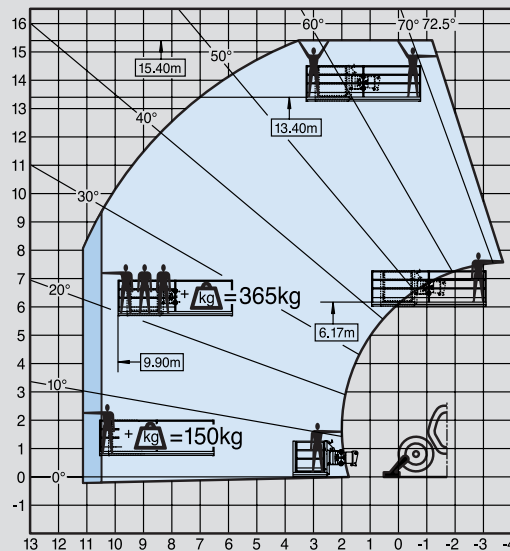
 **PERKINS engine**  
 Type .....1104D-44TA  
 Capacity .....4 cyl. - 4400 cm<sup>3</sup>  
 Power (ISO/TR 14396) at 2200 rpm :  
 Turbo .....74,5 kW/101 HP  
 Maximum torque.....410 Nm at 1400 rpm  
 Direct injection  
 Water cooling

 **Transmission** .....Hydrostatic with automatic power regulation  
 Speeds forward and reverse.....4/2  
 Working speed .....de 0 à 14 km/h  
 Road speed .....de 0 à 25 km/h  
 Hydrostatic pump with variable flow and hydrostatic engine with variable cylinder capacity

 **Hydraulics**  
 Pump gear type .....250 bars/168 l/mn  
 Flow divider with priority to steering

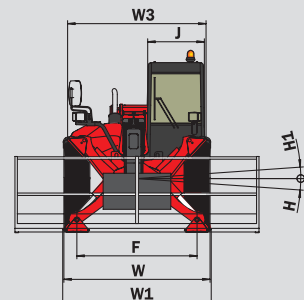
 **Capacities**  
 cooling system .....21.5 l.  
 Engine oil.....11 l.  
 Hydraulic oil.....126 l.  
 Fuel tank.....135 l.

 **Weight unladen** (with platform) .....10980 kg  
**Overall width** .....2.33 m  
**Overall height** .....2.57 m  
**Turning radius** (outside wheels) .....4.11 m  
**Overall Length** .....8.09 m  
**Ground clearance**.....0.45 m  
**Drawbar pull** .....8000 daN

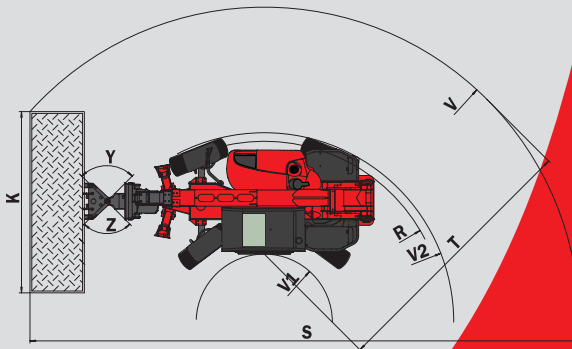
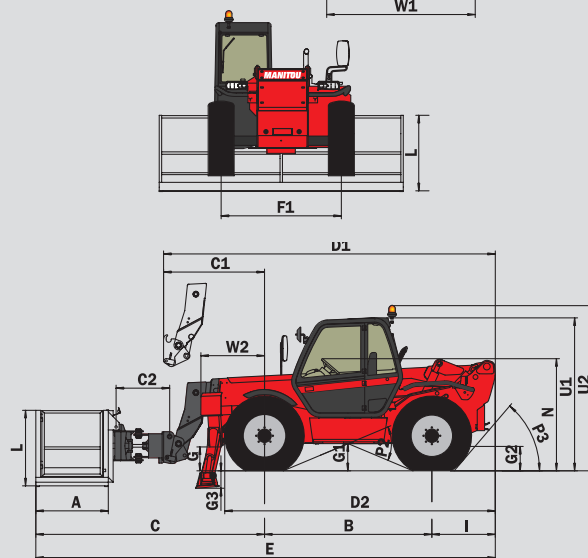


4M PLATFORM WITH HYDRAULIC ROTATION

Options of platform	
Fixed 2 m	
Adjustable 2 m	365 kg
Adjustable 2.40 m	including
Adjustable and extendable 2.45/5 m	3 people
Adjustable and extendable 2.45/6 m	



A	1200
B	2770
C	4270
C1	2348
C2	887
D1	6168
D2	4405
E	8090
F	1916
F1	1916
G	450
G1	445
G2	450
G3	275
H	7°
H1	7°
I	1050
J	950
K	2250-4000
L	1250
N	1890-1910
P2	43,5°
P3	40°
R	3905
S	9767
T	5916
U1	2575
U2	2755
V	7386
V1	1470
V2	4112
W	2330
W1	2320
W2	1125
W3	2035
Y	90°
Z	90°



mm

This publication in no way constitutes an offer and the company reserves the right to alter specification without prior notice.  
 The MANITOU models presented in this brochure can be supplied complete with optional equipment attachments.



**MANITOU BF SA**  
 B.P. 249 - 44158 Ancenis Cedex - France  
 Tel. : 33 2 40 09 10 11 / Export Department Fax : 33 2 40 09 10 97  
 www.manitou.com

700329EN-C - 06/08 - BI 271/Ind. B

