

Semi-industrial
trucks

MSI 40 H
MSI 50 H

- Rated capacity: 4,000 and 5,000 kg
- Hydrostatic transmission
- Joystick with built-in reverse control
- Enclosed cab



 **MANITOU**

MSI 40/50 H : Easily ma

The MSI is a compact truck featuring large-diameter wheels and high ground clearance that provide it with an excellent ability to ride over obstacles and outstanding manoeuvrability for both warehouse and yard operations.

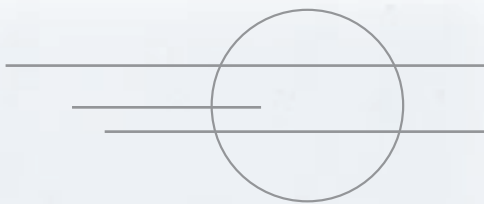
The MSI can easily access every corner of your yard, whether hard or soft standing, thereby utilising every square metre of storage space.



The low-pressure tyres absorb the shock of driving over obstacles and give perfect grip on slippery surfaces. In addition, the front axle is fitted with a differential lock as standard.



noeuvrable both indoors and outdoors



- **A broader range of application**

The lateral stability of the MSI, optimised by the track width to wheelbase ratio, **makes it possible to handle long loads or several pallets at a time in complete safety.**

More stable than a conventional forklift, **the MSI can handle a bigger load, thus reducing the number of trips.**



In aisles, its compactness and **very tight turning circle due to a steering axle with built-in cylinder provides incredible manoeuvrability.**

MSI 40/50 H : Co

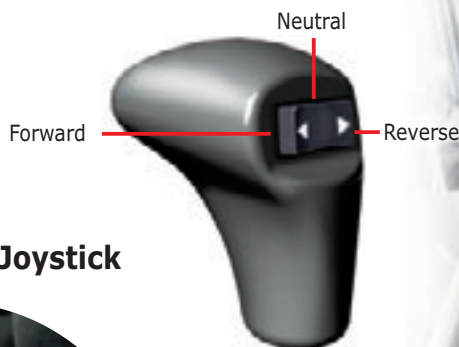
Perfect ergonomics

Every detail of the cab has been ergonomically designed **to reduce operator fatigue and improve productivity.**

The main lever combines all controls: up, down, tilt, and reverse.

This mean the driver **can carry out all handling operations while keeping one hand on the steering wheel at all times.**

Standard lever



Optional Switch & Move Joystick



Cycle times are reduced by the increased speed of hydraulic movements.

The cab of the MSI is remarkably spacious and has wide windows.

Depending on the weather, the operator can work with the door open or closed.

In the open position, the door still falls within the counter balance width. In addition, the right-hand window can be opened completely or left ajar.



comfortable and safe



Visibly safer

The cab is easy, quick and safe to access. Once seated, the operator enjoys all-round visibility throughout.

- **Full visibility of the forks** on the ground when picking up pallets and through the mast when loading.
- **All-round visibility** putting the operator in full control to **reduce the risk of accidents.**



- The full-view roof window **optimizes upward field of vision.**



The operator has a total command of all his manoeuvres and stays aware of his surroundings.

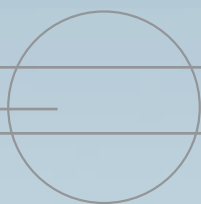
The MSI offers optimum safety conditions for materials handling.

COMFORT

MSI 40/50 H : Simple

Speedy maintenance

Maintenance and servicing times are reduced.



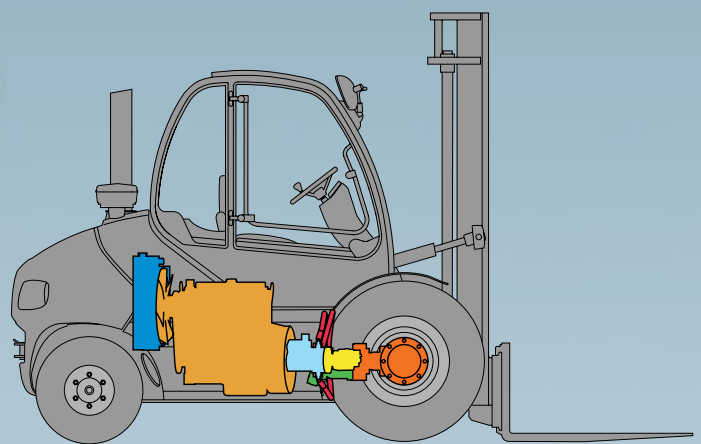
olified maintenance










Truly efficient

The Perkins 1104C44 (67kW/84 hp) engine, the hydrostatic drive **gives the speed and power you need for intensive materials handling on site.**

Hydrostatic braking occurs when the accelerator pedal is released, **ensuring controlled approach, millimetre by millimetre.**



-  Radiator
-  Diesel engine
-  Hydrostatic pump
-  Hydraulic motor
-  Servo-pump
-  Axle
-  High pressure hose

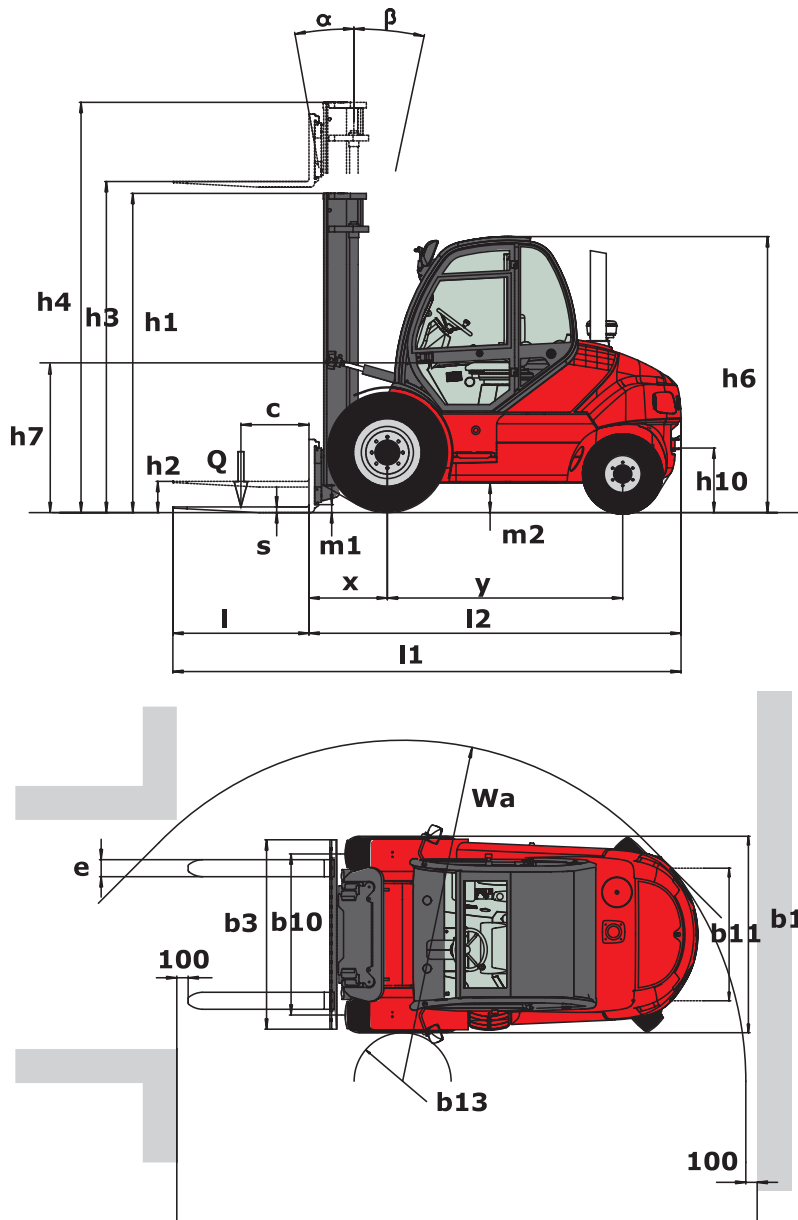
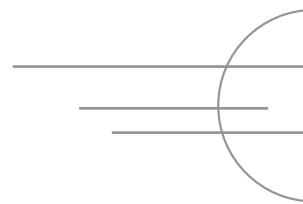
RELIABILITY

Description	1.1	Manufacturer		MANITOU	MANITOU
	1.2	Type of model		MSI 40 H	MSI 50 H
	1.3	Power source: battery, diesel, petrol, LPG, mains		Diesel	Diesel
	1.4	Driving position: manual, walking alongside, standing, seated		Seated	Seated
	1.5	Rated capacity load / Load on forks (basic capacity)	Q (t)	4	5
	1.6	Centre of gravity of the load	c (mm)	500	600
	1.8	Distance from load bearing surface to centre of front axle	x (mm)	691	701
	1.9	Wheelbase	y (mm)	2075	2075
	Weight	2.1	Kerb weight of truck	kg	7075
2.2		Front axle load laden	kg	9695	11510
2.2.1		Rear axle load laden	kg	1380	1690
2.3		Front axle load unladen	kg	3400	3380
2.3.1		Rear axle load unladen	kg	3675	4820
Running carriage	3.1	Tyre equipment: bandage(V), superelastic(SE), pneumatic(L)		L	L
	3.2	Size of front wheels	" or mm	315/70 R22,5	315/70 R22,5
	3.3	Size of rear wheels	" or mm	225/75 R15	225/75 R15
	3.5	Number of front wheels (x = drive wheel)		2x	2x
	3.5.1	Number of rear wheels (x = drive wheel)		2	2
	3.6	Front wheel track (middle of wheels)	b10 (mm)	1420	1420
	3.7	Rear wheel track (middle of wheels)	b11 (mm)	1157	1157
Dimensions	4.1	Tilt of mast forward	α (°)	10	10
	4.1.1	Tilt of mast backward	β (°)	12	12
	4.2	Height mast lowered	h1 (mm)	2775	2775
	4.3	Normal free lift	h2 (mm)	-	-
	4.4	Height of lift	h3 (mm)	3750	3760
	4.5	Height mast extended	h4 (mm)	4677	4672
	4.7	Height of driver protection (cab)	h6 (mm)	2434	2434
	4.8	Height of seat	h7 (mm)	1300	1300
	4.12	Height of towing bar	h10 (mm)	540	540
	4.19	Overall length	l1 (mm)	4494	4574
	4.20	Length at fork heels	l2 (mm)	3294	3374
	4.21	Total width (overall)	b1 (mm)	1732	1732
	4.22	Section of fork arms	s (mm)	50	60
	4.22.1	Width of fork arms	e (mm)	150	150
	4.22.2	Length of fork arms	l (mm)	1200	1200
	4.23	Fork carriage to DIN 15173 A/B		FEM3A	FEM4A
	4.24	Width of fork carriage	b3 (mm)	1670	1670
	4.31	Ground clearance of mast	m1 (mm)	185	185
	4.32	Ground clearance at centre of wheel-base	m2 (mm)	220	220
	4.33	Width of aisle for pallet 1000x1200 crossways	Ast (mm)	4756	5041
4.34	Width of aisle for pallet 800x1200 lengthways	Ast (mm)	4956	5241	
4.35	Turning radius (position down/up)	Wa (mm)	2865	2950	
4.36	Inner turning radius	b13 (mm)	125	125	
Performance	5.1	Speed of travel laden	km/h	22	22
	5.1.1	Speed of travel unladen	km/h	21.5	21.5
	5.2	Speed of raise laden	m/s	0.58	0.49
	5.2.1	Speed of raise unladen	m/s	0.59	0.51
	5.3	Speed of lowering laden	m/s	0.48	0.4
	5.3.1	Speed of lowering unladen	m/s	0.43	0.35
	5.5	Nominal towing power laden	N	3350	3350
	5.5.1	Nominal towing power unladen	N	2200	2200
	5.7	Slope laden	%	30	22
	5.7.1	Slope unladen	%	35	33
5.9	Acceleration time laden	s	-	-	
5.9.1	Acceleration time unladen	s	-	-	
5.10	Service brake		Hydrostatic	Hydrostatic	
Engine	7.1	Manufacturer / Type of engine		Perkins/1104C-44	Perkins/1104C-44
	7.2	Power delivery according to ISO/TR 14396	kW	61.5	61.5
	7.3	Rated speed	rpm	2200	2200
	7.4	Number of pistons / Cubic capacity	cm ³	4/4400	4/4400
Miscell.	8.1	Speed control		Hydrostatic	Hydrostatic
	8.2	Hydraulic pressure to serve accessories	bar	230	230
	8.3	Oil flow for accessories	l / min	103	103
	8.4	Average noise level for the driver (in motion) measured / guaranteed	dB (A)	83	83

	Lifting mast mm	Height of free lift H2		Height of mast when...				Height at maximum capacity (mm)		Capacity at maximum height (kg)	
		MSI40	MSI50	lowered H1		raised H4		MSI40	MSI50	cdg 500 mm	cdg 600 mm
Duplex total visibility	3000	-	-	2425	2425	3977	3972	3000	3000	4000	5000
	3300	-	-	2575	2575	4277	4272	3300	3300	4000	5000
	3500	-	-	2675	2675	4477	4472	3500	3500	4000	5000
	3700	-	-	2775	2775	4677	4672	3700	3700	4000	5000
	4000	-	-	2925	2925	4977	4972	4000	4000	4000	5000
	4500	-	-	3175	3175	5477	5472	4500	4000	4000	4800
	5000	-	-	3425	3425	5977	5972	5000	4000	4000	4800
Duplex free lift	3000	1532	1541	2425	2450	3968	3972	3000	3000	4000	5000
	3300	1682	1691	2575	2600	4268	4272	3300	3300	4000	5000
	3500	1782	1791	2675	2700	4468	4472	3500	3500	4000	5000
	3700	1882	1891	2775	2800	4668	4672	3700	3700	4000	5000
	4000	2032	2041	2925	2950	4977	4972	4000	4000	4000	5000
Triplex free lift	3700	1258	1263	2175	2175	4667	4672	3700	3700	4000	4900
	4000	1358	1363	2275	2275	4967	4972	4000	4000	4000	4900
	4300	1458	1463	2375	2375	5267	5272	4300	4300	4000	4900
	4500	1533	1538	2450	2450	5467	5472	4500	4300	4000	4800
	4700	1593	1598	2510	2510	5667	5672	4500	4300	3800	4600
	5000	1708	1713	2625	2625	5967	5972	4500	4300	3700	4400
	5500	1858	1863	2775	2775	6467	6472	4500	4300	3500	3800
	6000	2033	2038	2950	2950	6967	6972	4500	4300	3400	3100

Standard equipment:

- Enclosed cab with tinted glass
- Fabric seat
- Adjustable steering column
- Heater
- Front and rear wipers, front screen wiper
- Left and right external rear-view mirror
- Rear road lights
- Cross-shaped lever with built-in reverser
- Load absorber
- Electro-hydraulic lifting of the cab
- Wiper and washer on roof light
- Sun visor over roof
- Differential lock



		Tread
Standard tyre	FRONT	315/70 R 22,5 RHS
	REAR	225/75 R15 XZM
Optional tyre	FRONT	445/65 R 19,5 XZY 165 K
		12.5 R 20 MPT 80 16 PR
		12.5 R 20 MPT 80 22 PR
		16/70 - 20 14 PR
	REAR	FLEXIBLE SOLID TYRE 10.00 X 20 CSE
	FLEXIBLE SOLID TYRE 28-9 X 15 CSE	

Options:

- Headlights
- Rotating beacon
- Reverse alarm
- Double front working lights
- Single rear working light
- Air conditioning and roof light
- Internal rear-view mirror
- Radio
- Sun blind for windscreen
- Various accessories such as sideshift, clamps, double sideshift, mono-multiforks.

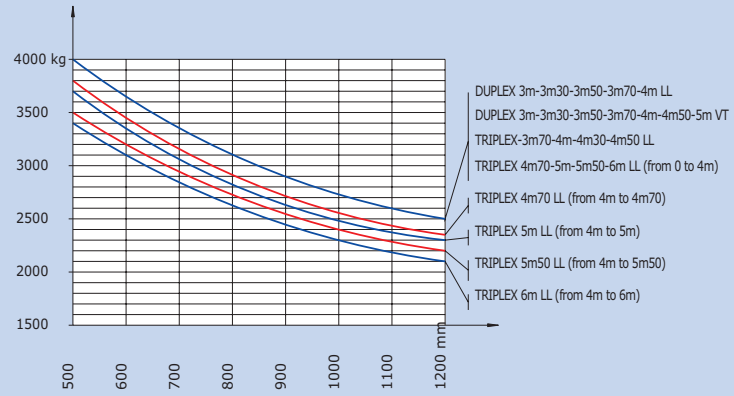
shers
rs
e control



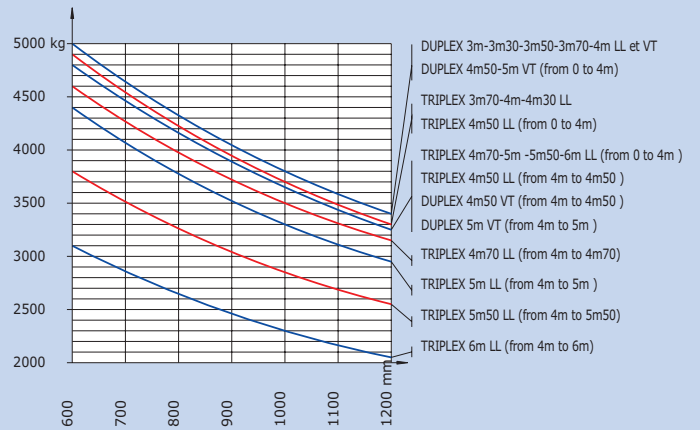
	Tyre width (mm)	Overall vehicle width (mm)	Design
	312	1732	
	220	1377	
	455	1945	
	340	1730	
	451	1951	
	265	1695	
	222	1379	

SPECIFICATIONS

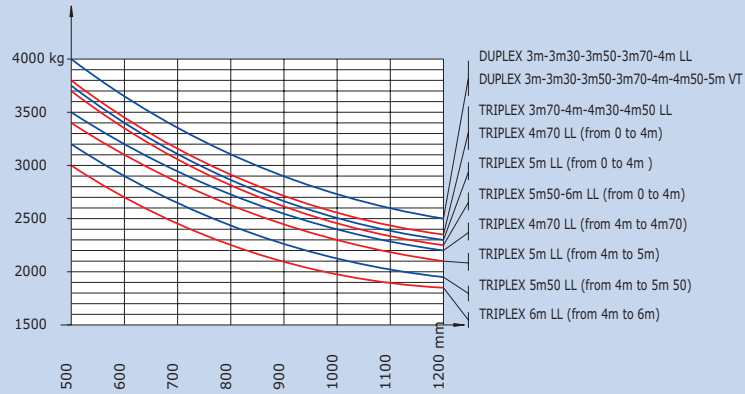
MSI40H: LOAD CHART WITHOUT SIDESHIFT CARRIAGE



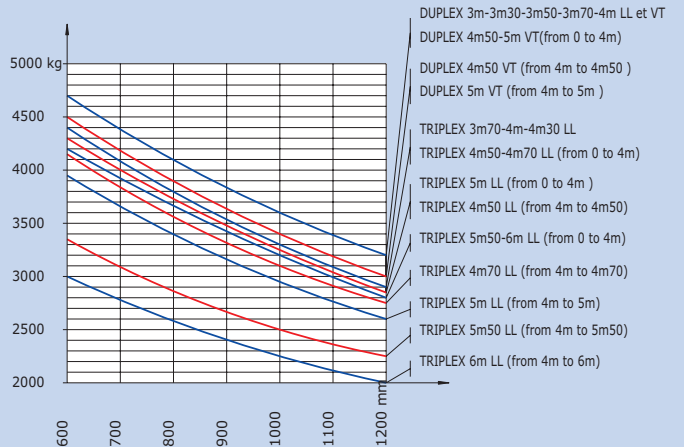
MSI 50H: LOAD CHART WITHOUT SIDESHIFT CARRIAGE



MSI40H: LOAD CHART WITH SIDESHIFT CARRIAGE



MSI50H: LOAD CHART WITH SIDESHIFT CARRIAGE



Enjoy the service that goes with it!



**The success of a partnership
is measured over time.**

To manage that, we lay great emphasis on service: the locality of our sales network, ongoing technical training, the logistics of delivering spares. And we go the extra mile – suitable modular financing options, advice and expertise.

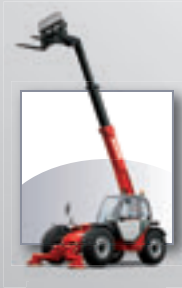
**In your business, as in ours,
responsiveness and
professionalism
are what matter.**



Anywhere in the world,
95% of MANITOU spares are
sent out within 24 hours.
**That's the sort of
response you need!**

Manitou, material handling world leader

Inventor of the rough terrain forklift truck, Manitou offers today the most comprehensive range to meet all specific handling and personal lifting requirements :



MANISCOPIC
Telescopic trucks



MANITOU
Rough terrain and semi industrial masted trucks



MANIACCESS
Access equipment



Twisco
Compact telescopic handler



MANIHOE
Backhoe/Loader with telescopic boom



MANITRANSIT
Truck mounted forklifts



MANILOADER
Articulated wheeled loaders



MANILEC
Electric pallet trucks and electric stackers

A network of skilled professionals at your service !

With a network of 600 service and parts centres in more than 120 countries, Manitou provides an efficient after-sales support based on the expertise of thousands of factory trained technicians.



The equipment supplied with each model may differ from that described in this leaflet. For more details, contact your MANITOU dealer.